

# Open Data for Better Decision Making



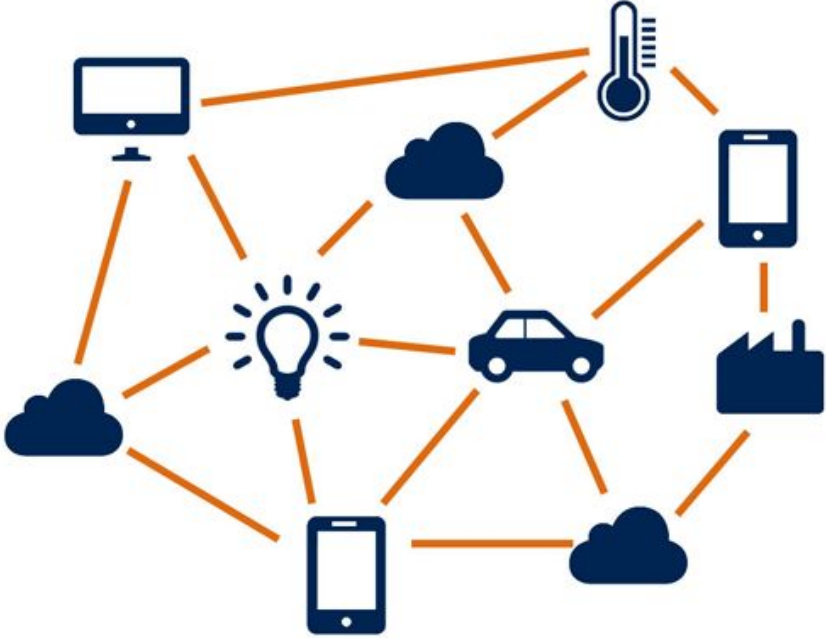
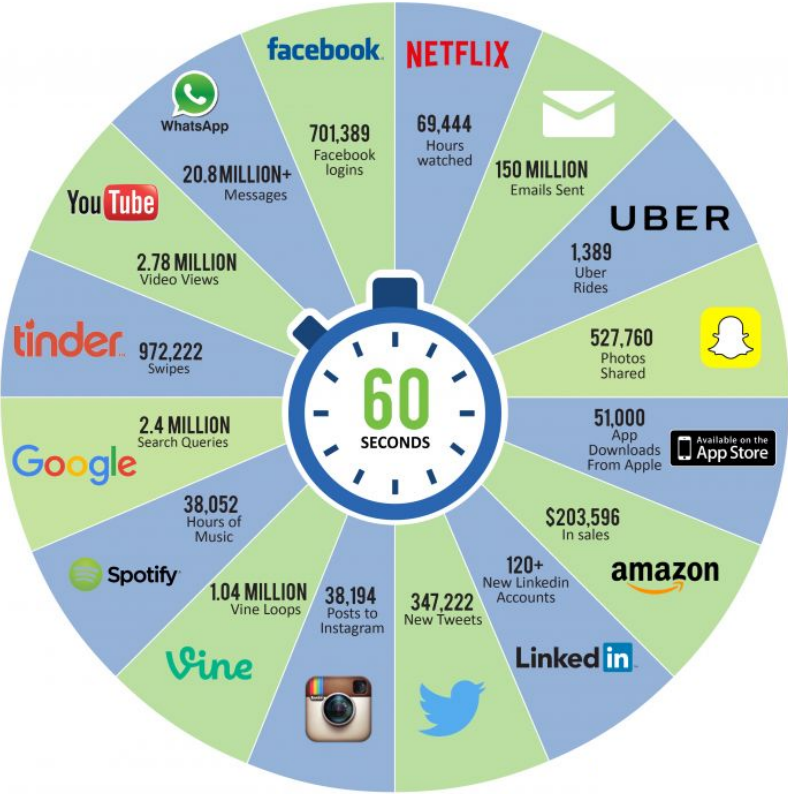
Matthew Adendorff  
Lead Technologist  
@mattadendorff

SatRday  
18 Feb 2017



[bit.ly/ODD\\_satRday](http://bit.ly/ODD_satRday)

# Life in the data age



# Garbage in, garbage out

---

Big doesn't mean useful

Big is expensive

Big is slow

Inference should always be plan-B

What is your reference?

# Civic Tech and Open Data



The screenshot shows the DATA.GOV website. At the top left is the logo with an American flag icon. To its right are navigation links: DATA, TOPICS, IMPACT, APPLICATIONS, DEVELOPERS, and CONTACT. Below the navigation is a blue banner with the text "The home of the U.S. Government's open data" and a subtext "Here you will find data, tools, and resources to conduct research, develop web and mobile applications, design data visualizations, and [more](#)." Below the banner is a grey section with the text "GET STARTED" and "SEARCH OVER 194,541 DATASETS". A search bar contains the text "Credit Card Complaints" and a search icon. Below the search bar is a "BROWSE TOPICS" section with a grid of 14 icons representing various categories: Agriculture, Climate, Consumer, Ecosystems, Education, Energy, Finance, Health, Location, Industry, Infrastructure, Safety, and Science.

2009 → 47 sets

2016 → 190,000+

# Opening government data - wazimap.co.za

Wazimap South Africa MEDIA MONITORING Start typing a place name or address.


**Where to?** Find a place in South Africa...

or Use your current location

or Browse South Africa

**Find data** Find a dataset. Try searching for age or gender

**Discover the story behind the data.**



Map of South Africa showing regional boundaries and major cities. The map includes labels for various regions such as Northern Cape, Free State, Eastern Cape, Western Cape, Northern Province, North West, and Limpopo. Major cities like Cape Town, Port Elizabeth, Durban, Johannesburg, and Pretoria are also marked.

[Learn](#) | [Map data](#) | [OpenStreetMap](#) contributors [CC-BY-SA](#)

- Find facts**  
Populations and financial figures are broken down by category: Elections, Demographics, Service Delivery, Economics and Education.
- Visualize**  
Our library of charts gives you insight into data from the places you research. Look for them on profile pages. You can even [embed the charts](#) on your own site.
- Get context**  
Pre-computed statistics are presented alongside each data point, so you can see how each place fits into a larger context.

# Opening government data - municipalmoney.gov.za

Municipal Money [About](#) [Frequently Asked Questions](#)

**How well is your municipality managing its money?**

Search for a municipality in South Africa

or [Use your current location](#)

## A QUICK INTRODUCTION TO MUNICIPAL FINANCE



**Municipal Money is our money, spent in our name.**

As citizens, we should know how this money has been spent and also have a say in how money is spent in the future to better our lives.

[Find out more →](#)

[English](#) [Afrikaans](#) [Sesotho](#) [isiXhosa](#) [isiZulu](#)

Where do you live?

A map of South Africa showing the boundaries of various municipalities. Major cities like Cape Town, Durban, and Johannesburg are labeled. The map is interactive, with zoom in (+) and zoom out (-) buttons in the top right corner.

Leaflet | Map data © OpenStreetMap contributors, CC-BY-SA

# Leveraging this data

Indicator Selector

Data Set: Access to electricity - Lighting a...

Region: EThekwini

Region Type: City

Theme: Well-governed

Year: 2012

Indicator: Access to electricity

Please select an indicator...

Reset Form

Wazimap Selector

Region: Cape Town

Category: Child Households

Sub-Category: Annual Income Distribution

Submit

Municipal Money Selector

Region: Johannesburg

Cube: Aged Creditor Analysis

Category: Bulk Electricity

Year:

Data Type: Audited Actual Budget

Submit


My Datasets Selector

Dataset name:

Submit

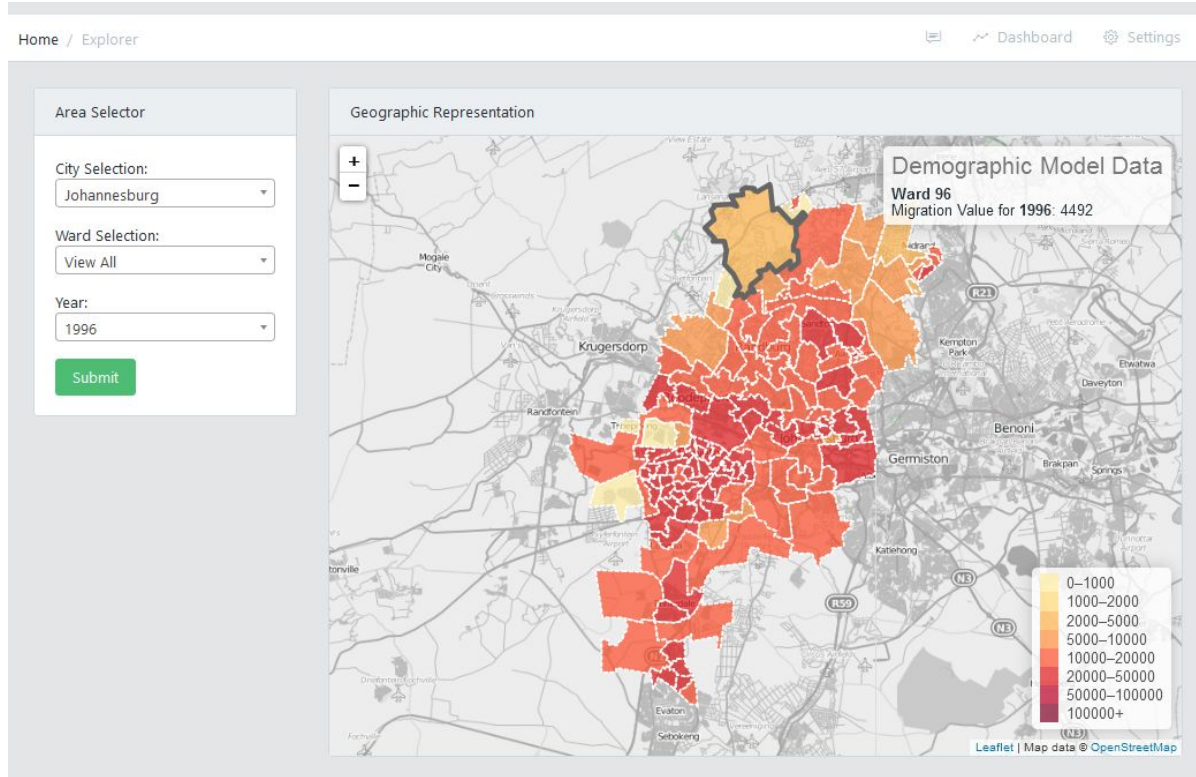
Your Current Analysis Data Set

City	Year	Access to electricity - Not using	Access to electricity - Lighting and other	Access to electricity - Lighting only	Access to refuse removal - Personally rem
Ekurhuleni	2013	216,036.99	763,334.65	58,895.34	57,€
Ekurhuleni	2012	198,625.91	734,890.47	50,532.51	52,€
EThekwini	2013	87,675.77	867,330.71	19,399.4	89,7
EThekwini	2012	95,201.36	873,771.01	19,876.83	94,€
Cape Town	2013	47,134.11	999,196.55	55,758.3	11,€
Cape Town	2012	52,184.01	979,991.56	47,897.6	11
Tshwane	2013	135,241.84	772,951.74	41,390.15	101,€



open data durban

# A move to open research and collaboration





Thank you!

Open Data Durban

[www.opendata.durban](http://www.opendata.durban)



facebook.com/opendatadurban



@opendatadurban



Matthew Adendorff, Lead Technologist

e-mail: [matthew@opendata.durban](mailto:matthew@opendata.durban)

mobile: +27(0) 71 338 0126

skype: [matt.adendorff](https://www.skype.com/people/matt.adendorff)

twitter: [@mattadendorff](https://twitter.com/mattadendorff)